

# Managementul lichiditatii

[ - experiente regionale - ]

Nicolaie Alexandru-Chidesciuc, CFA, Ph.D.

Economist sef ING Bank N.V. Amsterdam –  
Sucursala Bucuresti



***“Toate familiile fericite seamăna între ele, fiecare familie nefericită este nefericită în felul ei “***

**(Anna Karenina, Lev Tolstoi)**

# Importanta managementului lichiditatii

**Sistemul bancar este, prin definitie, fragil**

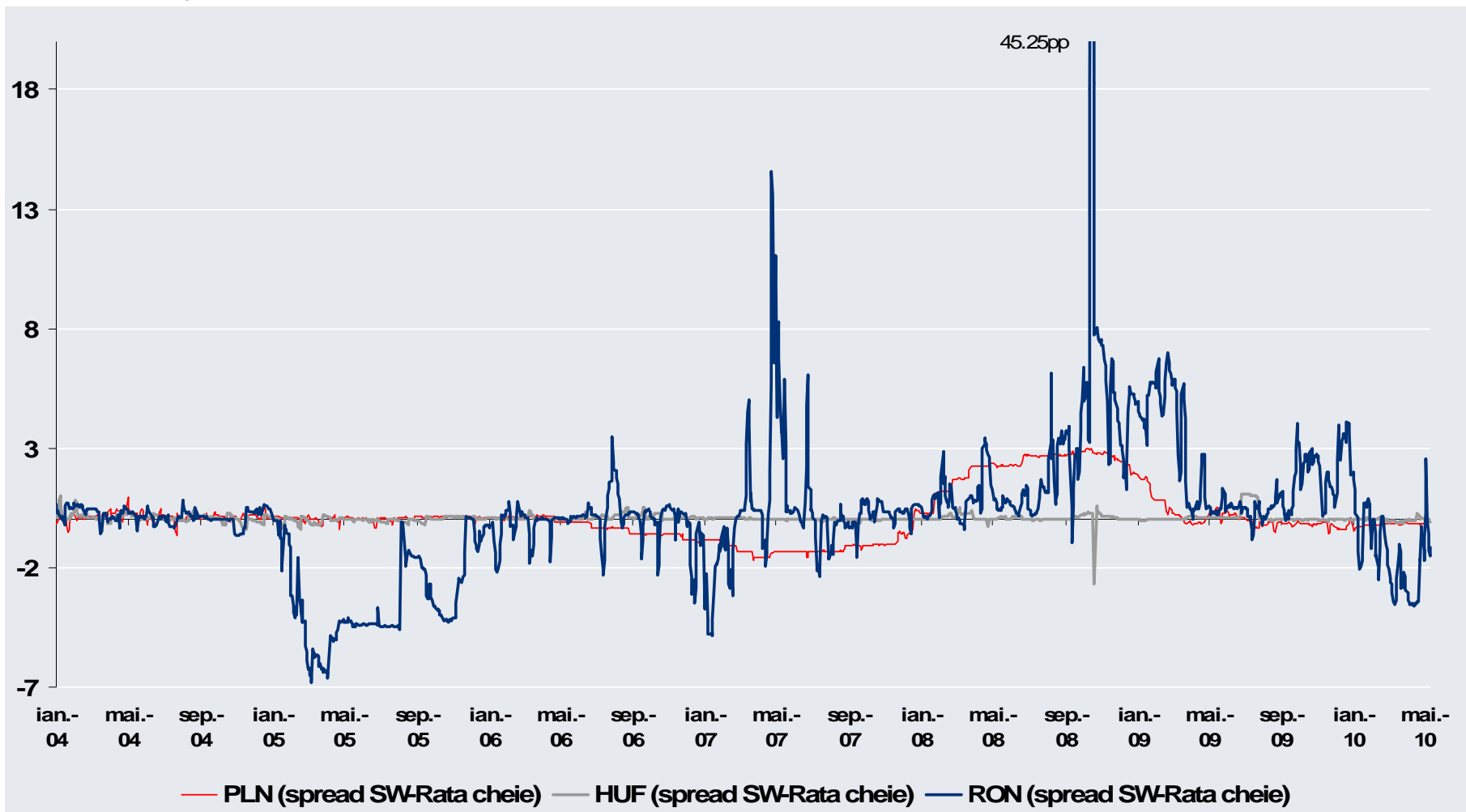
**Cererea mare de bani la un moment dat poate afecta puternic valoarea actualizata neta cu posibil impact negativ asupra stabilitatii financiare si asupra economiei**

**Managementul lichiditatii de catre o banca centrala presupune un cadru, un set de instrumente si, in mod deosebit, regulile pe care banca centrala le urmareste pentru a controla volumul de rezerve a bancilor comerciale cu scopul de a influenta pretul acestora din urma (i.e. rata dobanzii pe termen scurt). (vezi Ulrich Bindseil, BCE, 2000)**

**Controlul direct al ratelor de dobanda e posibil (fara cantitati) – oferirea sau absorbirea de lichiditate la o rata de dobanda pre-anuntata**

# Perspectiva regionala asupra ratelor de dobanda (1)

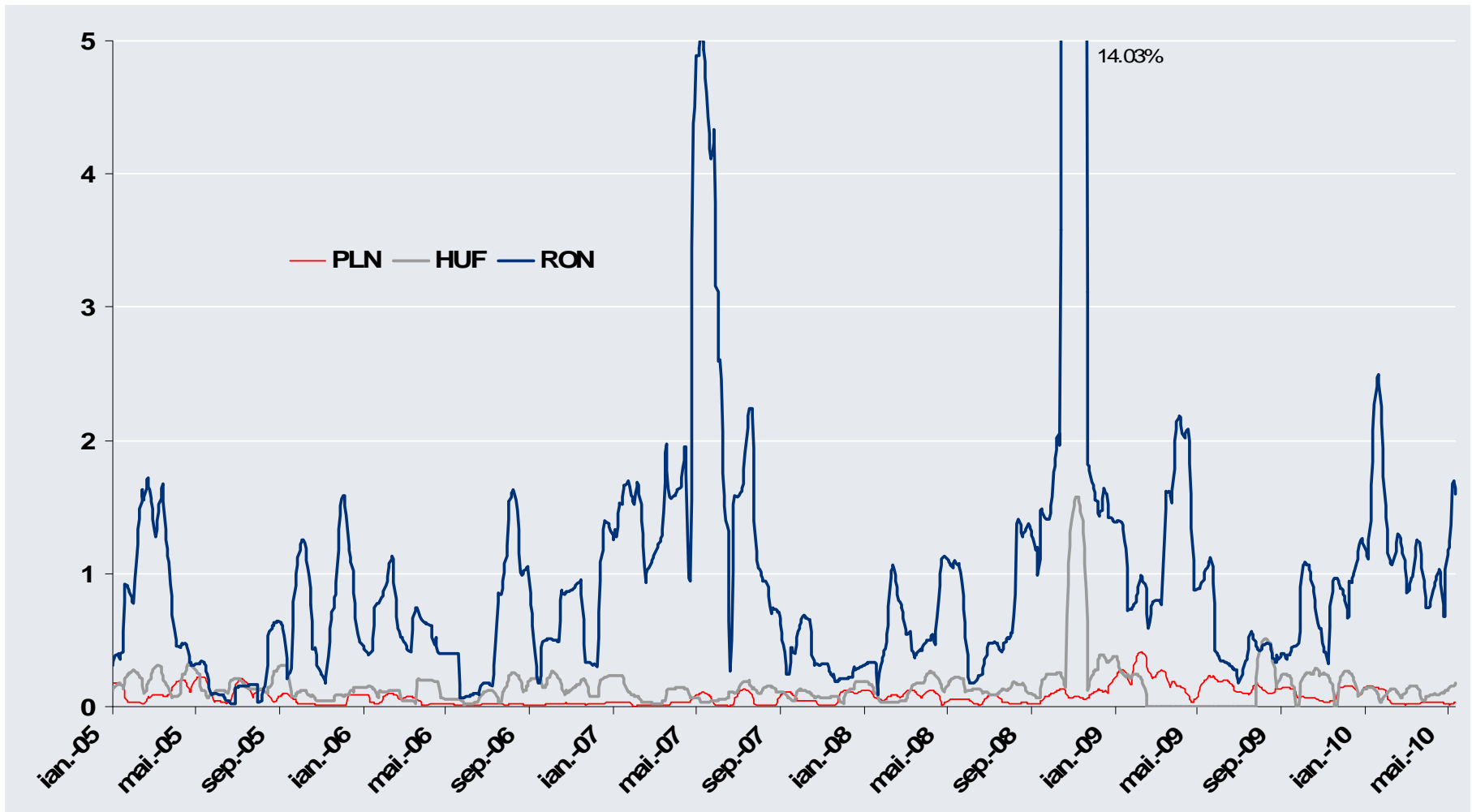
## Decalajul dintre rata la 1W si rata de politica monetara (pp)



Sursa: BNR, MNB, Reuters, calcule ING

# Perspectiva regionala asupra ratelor de dobanda (2)

## Volatilitatea lunara a ratelor de dobanda la 1W



Sursa: BNR, MNB, Reuters, calcule ING

# Intervalul din jurul ratei cheie

Latimea coridorului ofera o prima explicatie: costul intermediarii impus de catre banca centrala este dat de latimea coridorului (Goodhart, 2009).

	Acum	Inceput de criza	Inainte de criza
Romania	800pb	800pb	800pb
Polonia	300pb	300pb	300pb
Ungaria	200pb	100pb*	200pb
Cehia	150pb (asimetric)	200pb	200pb
BCE	150pb	100pb**	200pb

\* - incepand cu 22 octombrie 2008

\*\* - intre 9 octombrie 2008 si 21 ianuarie 2009

Sursa: website-uri banci centrale

# Alte masuri adoptate de banci centrale

	<b>Polonia</b>	<b>Ungaria</b>	<b>Romania</b>
<b>Lichiditate in moneda locala</b>	<p>A extins maturitatea operatiunilor repo la 6 si 12 luni</p> <p>A rascumparat obligatiuni emise de BNP inainte de termen</p> <p>A largit colateralul acceptabil la refinantare</p>	<p>A extins facilitatea de credit pana la 6 luni</p> <p>Facilitate de credit in HUF de 2W</p>	<p>Operatiuni repo cu scadenta de la 2 zile la 1 luna</p> <p>Repo bilateral si/sau swap bilateral</p> <p>A introdus facilitatea de credit intraday (exista in Ungaria, Polonia)</p>
<b>Lichiditate in valute</b>	Facilitati swap la o luna in EUR, CHF si USD	Facilitati swap pana la 6 luni in EUR, 1W pentru CHF (EURCHF)	-
<b>Modificari ale coridorului</b>	Nemodificat la $\pm 1,5pp$	Redus de la $\pm 1pp$ to $\pm 0,5pp$	Nemodificat la $\pm 4pp$
<b>Modificari ale rezervei minime</b>	De la 3,5% la 3%	De la 5% la 2%	De la 20% la 15% pentru RON si de la 40% la 25% pentru FX

# Piata monetara din Romania - caracteristici

## Doua pietele paralele:

- **Depozite**

- Piata depo e restransa, ilichida (cotatii largi)
- Se tranzactioneaza volume mici (1-1,5 miliarde RON pe scadenta ON/TN)
- Nu exista piata peste 3M (era inainte de criza)

- **Swap**

- Volume mai mari pe piata swap (2-3 miliarde RON medie zilnica ON/TN)
- Se fac volume destul de mari la 3M (200-300 milioane RON)

- **Piata locala e determinata de jucatorii straini**

- **Jucatorii locali doar raspund la cererile strainilor**

- **Limitele sunt reduse/inexistente intre bancile locale**



# Concluzii

## Criza a impus adoptarea unor masuri extraordinare

### Cateva lectii:

- Banca centrala nu poate face minuni daca lipseste increderea intre banci
- Coridorul ar putea fi utilizat ca instrument
  - › Chiar modificarea independenta a parametrilor coridorului poate fi un puternic instrument de politica monetara
- Imbunatatirea comunicarii prin:
  - › Publicarea saptamanala de prognoze privind necesarul de lichiditate la nivelul sistemului bancar (ex: BCE si BNP)
  - › Publicarea excesului sau deficitului de lichiditate la nivel de sistem bancar (BNP)

# Disclosures and disclaimer

## **ANALYST CERTIFICATION**

The analyst(s) who prepared this presentation hereby certifies that the views expressed in this presentation accurately reflect his/her personal views about the subject securities or issuers and no part of his/her compensation was, is, or will be directly or indirectly related to the inclusion of specific recommendations or views in this report.

## **IMPORTANT DISCLOSURES**

**Company disclosures are available from the disclosures page on our website at <http://research.ing.com>.**

The *remuneration of research analysts* is not tied to specific investment banking transactions performed by ING Group although it is based in part on overall revenues, to which investment banking contribute.

*Securities prices:* Prices are taken as of the previous day's close on the home market unless otherwise stated.

*Conflicts of interest policy.* ING manages conflicts of interest arising as a result of the preparation and publication of research through its use of internal databases, notifications by the relevant employees and Chinese walls as monitored by ING Compliance. For further details see our research policies page at <http://research.ing.com>.

## **FOREIGN AFFILIATES DISCLOSURES**

Each ING legal entity which produces research is a subsidiary, branch or affiliate of ING Bank N.V. See the disclosures pages on our website at <http://research.ing.com> for the addresses and primary securities regulator for each of these entities.

## **DISCLAIMER**

This presentation has been prepared on behalf of ING (being for this purpose the wholesale and investment banking business of ING Bank NV and certain of its subsidiary companies) solely for the information of its clients. ING forms part of ING Group (being for this purpose ING Groep NV and its subsidiary and affiliated companies). It is not investment advice or an offer or solicitation for the purchase or sale of any financial instrument. While reasonable care has been taken to ensure that the information contained herein is not untrue or misleading at the time of publication, ING makes no representation that it is accurate or complete. The information contained herein is subject to change without notice. ING Group and any of its officers, employees, related and discretionary accounts may, to the extent not disclosed above and to the extent permitted by law, have long or short positions or may otherwise be interested in any transactions or investments (including derivatives) referred to in this presentation. In addition, ING Group may provide banking, insurance or asset management services for, or solicit such business from, any company referred to in this presentation. Neither ING Group nor any of its officers or employees accepts any liability for any direct or consequential loss arising from any use of this presentation or its contents. Copyright and database rights protection exists in this presentation and it may not be reproduced, distributed or published by any person for any purpose without the prior express consent of ING. All rights are reserved. Any investments referred to herein may involve significant risk, are not necessarily available in all jurisdictions, may be illiquid and may not be suitable for all investors. The value of, or income from, any investments referred to herein may fluctuate and/or be affected by changes in exchange rates. Past performance is not indicative of future results. Investors should make their own investigations and investment decisions without relying on this presentation. Only investors with sufficient knowledge and experience in financial matters to evaluate the merits and risks should consider an investment in any issuer or market discussed herein and other persons should not take any action on the basis of this presentation. This presentation is issued: 1) in the United Kingdom only to persons described in Articles 19, 47 and 49 of the Financial Services and Markets Act 2000 (Financial Promotion) Order 2005 and is not intended to be distributed, directly or indirectly, to any other class of persons (including private investors); 2) in Italy only to persons described in Article No. 31 of Consob Regulation No. 11522/98. Clients should contact analysts at, and execute transactions through, an ING entity in their home jurisdiction unless governing law permits otherwise. ING Bank N.V. London Branch is authorised by the Dutch Central Bank. It is incorporated in the Netherlands and its London Branch is registered in the UK (number BR000341) at 60 London Wall, London EC2M 5TQ. ING Financial Markets LLC, which is a member of the NYSE, NASD and SIPC and part of ING, has accepted responsibility for the distribution of this presentation in the United States under applicable requirements. ING Vysya Bank Ltd is responsible for the distribution of this presentation in India.